

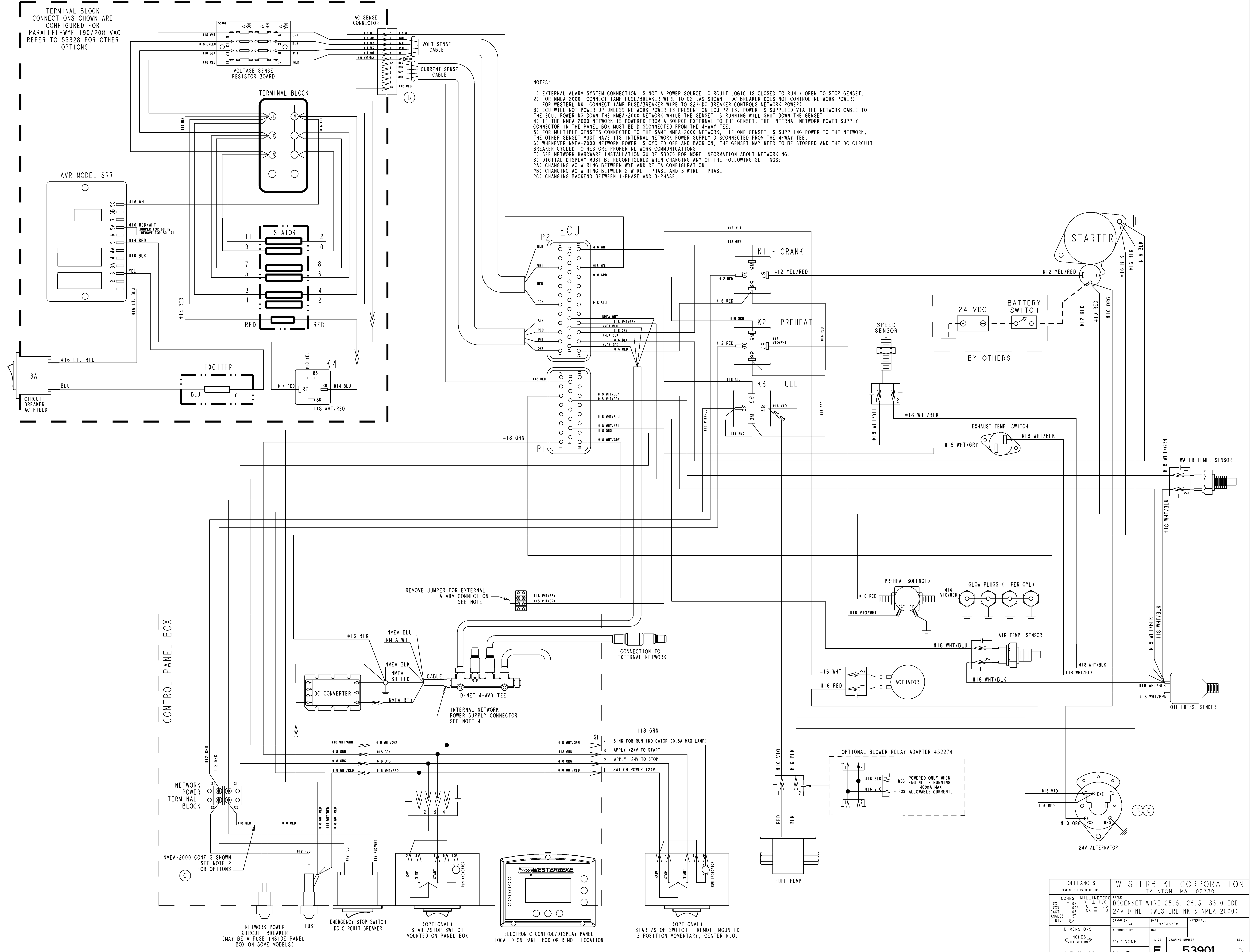
ECO NO.	DATE	REV.	REVISION RECORD	AUTH.	DR. BY
6457	2-28-2008	A	RELEASE PART FOR PRODUCTION.		GA
6510	5-8-2008	B	REMOVE 18-BLK BETWEEN P1-PIN 3 TO P3-PIN 10		GA
6677	3-28-2010	C	ALT WAS SHOWN AS 12V. REVISED AND CLEANED UP. ADDED OPTIONAL CONFIGS ON SINGLE DRAWING.		GA
6722	8-18-2010	D			GMA

CONTROL BOX (AC)

TERMINAL BLOCK CONNECTIONS SHOWN ARE CONFIGURED FOR PARALLEL-WYE 190/208 VAC REFER TO 53328 FOR OTHER OPTIONS

NOTES:

- EXTERNAL ALARM SYSTEM CONNECTION IS NOT A POWER SOURCE. CIRCUIT LOGIC IS CLOSED TO RUN / OPEN TO STOP GENSET.
- FOR NMEA-2000: CONNECT AMP FUSE/BREAKER WIRE TO C2 (AS SHOWN - DC BREAKER DOES NOT CONTROL NETWORK POWER) FOR WESTERLINK; CONNECT IAMP FUSE/BREAKER WIRE TO S2?(DC BREAKER CONTROLS NETWORK POWER)
- ECU WILL NOT POWER UP UNLESS NETWORK POWER IS PRESENT ON ECU P2-13. POWER IS SUPPLIED VIA THE NETWORK CABLE TO THE ECU. POWERING DOWN THE NMEA-2000 NETWORK WHILE THE GENSET IS RUNNING WILL SHUT DOWN THE GENSET.
- IF THE NMEA-2000 NETWORK IS POWERED FROM A SOURCE EXTERNAL TO THE GENSET, THE INTERNAL NETWORK POWER SUPPLY CONNECTOR IN THE PANEL BOX MUST BE DISCONNECTED FROM THE 4-WAY TEE.
- FOR MULTIPLE GENSETS CONNECTED TO THE SAME NMEA-2000 NETWORK, IF ONE GENSET IS SUPPLYING POWER TO THE NETWORK, THE OTHER GENSET MUST HAVE ITS INTERNAL NETWORK POWER SUPPLY DISCONNECTED FROM THE 4-WAY TEE.
- WHENEVER NMEA-2000 NETWORK POWER IS CYCLED OFF AND BACK ON, THE GENSET MAY NEED TO BE STOPPED AND THE DC CIRCUIT BREAKER CYCLED TO RESTORE PROPER NETWORK COMMUNICATIONS.
- SEE NETWORK HARDWARE INSTALLATION GUIDE 53016 FOR MORE INFORMATION ABOUT NETWORKING.
- DIGITAL DISPLAY MUST BE RECONFIGURED WHEN CHANGING ANY OF THE FOLLOWING SETTINGS:
 - ?A) CHANGING AC WIRING BETWEEN WYE AND DELTA CONFIGURATION
 - ?B) CHANGING AC WIRING BETWEEN 2-WIRE 1-PHASE AND 3-WIRE 1-PHASE
 - ?C) CHANGING BACKEND BETWEEN 1-PHASE AND 3-PHASE.



TOLERANCES (UNLESS OTHERWISE NOTED)		WESTERBEKE CORPORATION TAUNTON, MA. 02780	
INCHES	MILLIMETERS	TITLE	DGGENSET WIRE 25.5, 28.5, 33.0 EDE
.XX	: .02	CAST	24V D-NET (WESTERLINK & NMEA 2000)
.XXX	: .005	FINISH	
ANGLES	: .5°	SCALE	NONE
FINISH	: .5°	DATE	
		APPROVED BY	
		SCALE	NONE
		SIZE	DRAWING NUMBER
		SHT. 1 OF 1	E 53901
		REV.	D