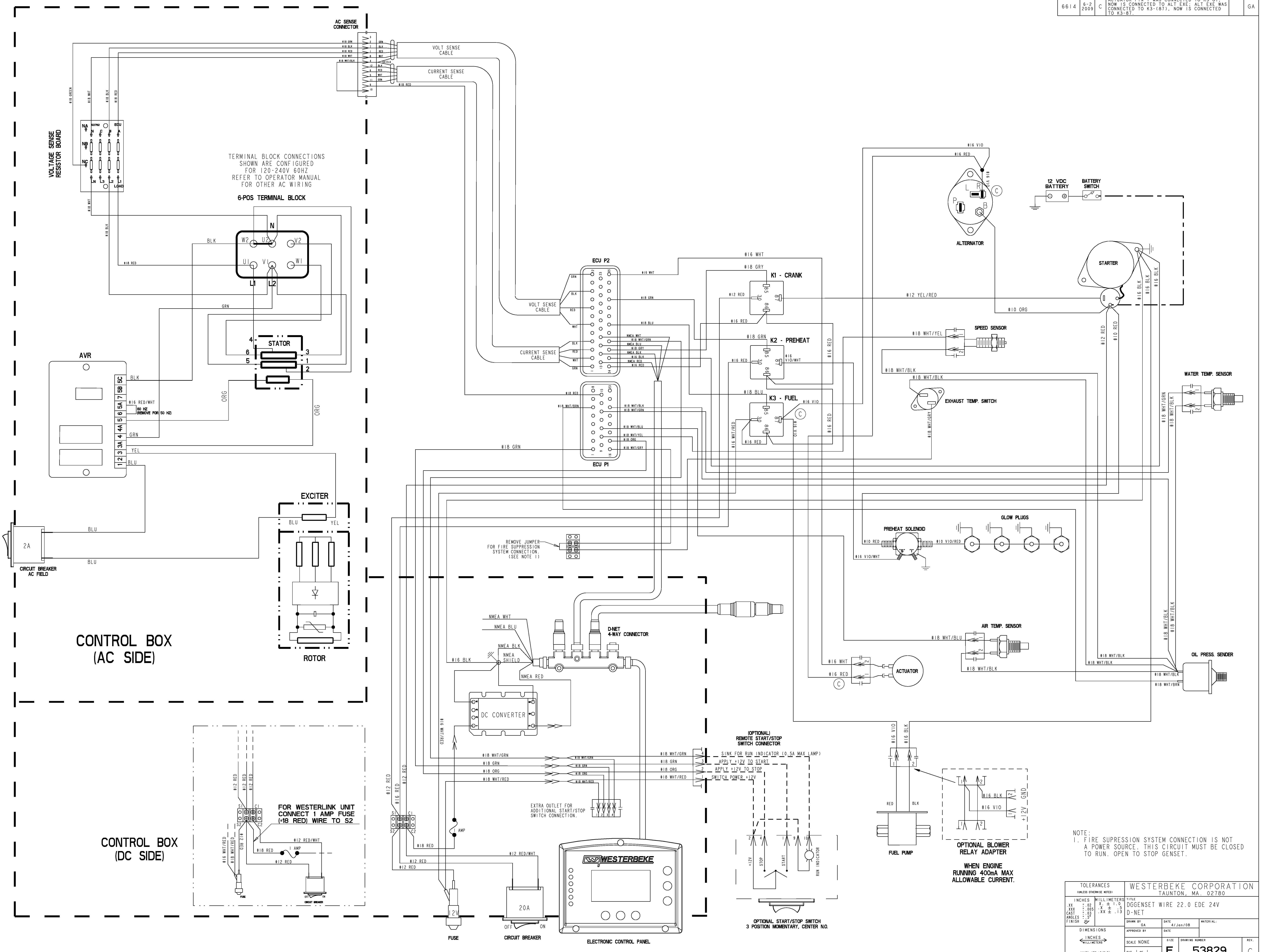


ECO NO.	DATE	REV.	REVISION RECORD	AUTH.	DR. BY
6432	2-4-2008	A	RELEASE PART FOR PRODUCTION.		GA
6510	5-8-2008	B	REMOVE 18-BLK BETWEEN P1-PIN 3 TO P3-PIN 10		GA
6614	6-2-2009	C	ACTUATOR PIN 1 WAS CONNECTED TO K3-B7. NOW IS CONNECTED TO ALT EXE; ALT EXE WAS CONNECTED TO K3-(B7). NOW IS CONNECTED TO K3-B7.		GA



TOLERANCES (UNLESS OTHERWISE NOTED)		WESTERBEKE CORPORATION TAUNTON, MA. 02780	
INCHES	MILLIMETERS	TITLE	DWGSET WIRE 22.0 EDE 24V
.XX	.02	D-NET	
.XXX	.005	DATE	4/Jan/08
CASST	.XX ± .13	SCALE	NONE
ANGLES	5°	SIZE	DRAWING NUMBER
FINISH	3X	SHT. 1 of 1	E 53829
DIMENSIONS	APPROVED BY	DATE	REV.
INCHES	GA		
MILLIMETERS			