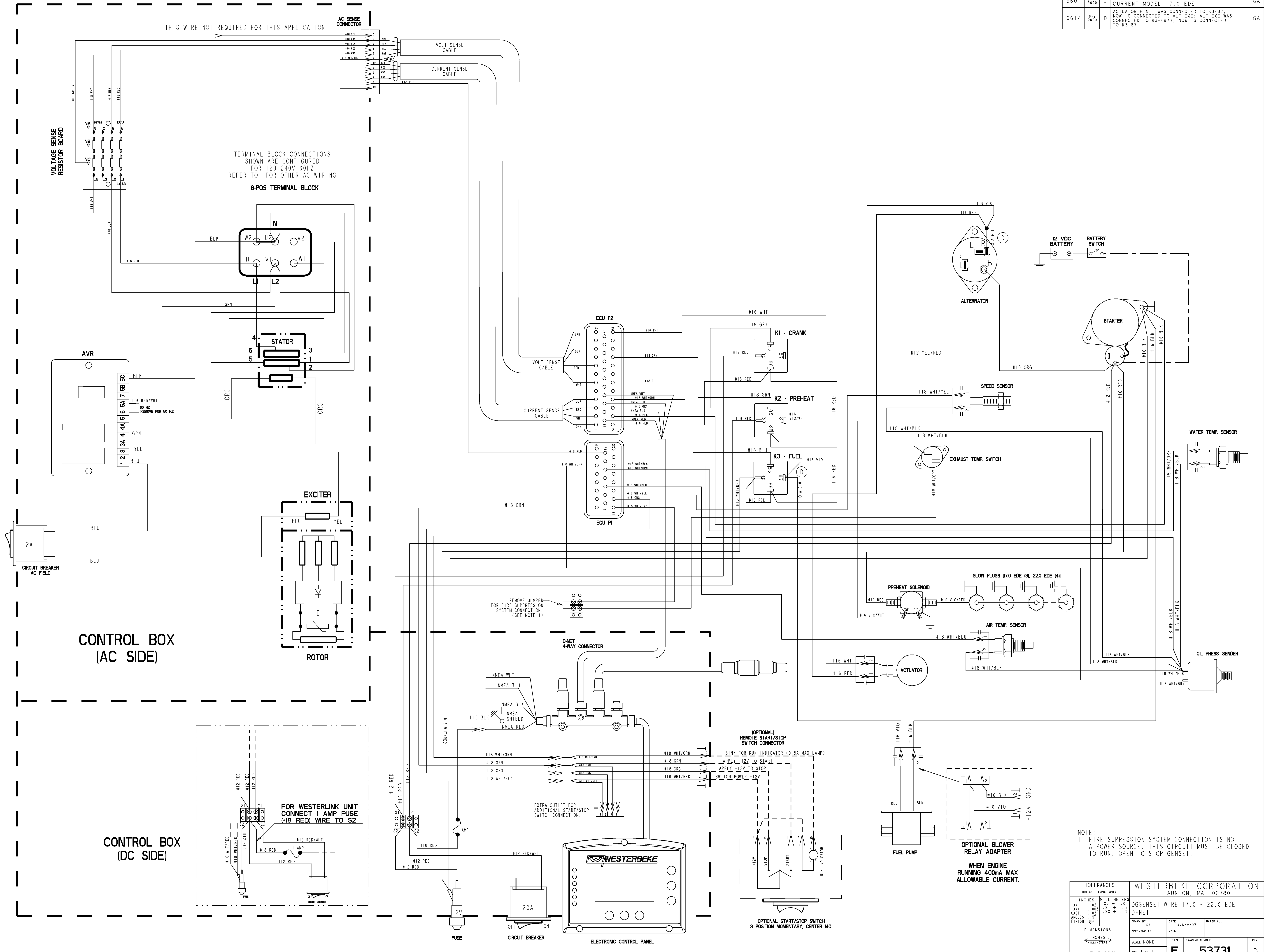


ECO NO.	DATE	REV.	REVISION RECORD	AUTH.	DR. BY
6425	2-12-2002	A	RELEASE PART FOR PRODUCTION.		GA
6510	5-8-2008	B	REMOVE 18-BLK BETWEEN P1-PIN 3 TO P3-PIN 10		GA
6601	7-11-2009	C	UPDATE TITLE BLOCK TO INCLUDE CURRENT MODEL 17.0 EDE		GA
6614	8-2-2009	D	ACTUATOR PIN 1 WAS CONNECTED TO K3-B7, NOW IS CONNECTED TO ALT EXE; ALT EXE WAS CONNECTED TO K3-(87), NOW IS CONNECTED TO K3-B7.		GA



TOLERANCES (UNLESS OTHERWISE NOTED)		WESTERBEKE CORPORATION TAUNTON, MA. 02780	
INCHES	MILLIMETERS	TITLE	DGGENSET WIRE 17.0 - 22.0 EDE
.XX	.02	DATE	14/Nov/07
.XXX	.005	SCALE	NONE
CASST	.XX	SIZE	E
ANGLES	3°	DRAWING NUMBER	53731
FINISH	Zn	REV.	D
(WHEN APPLICABLE)		SHT. 1 of 1	