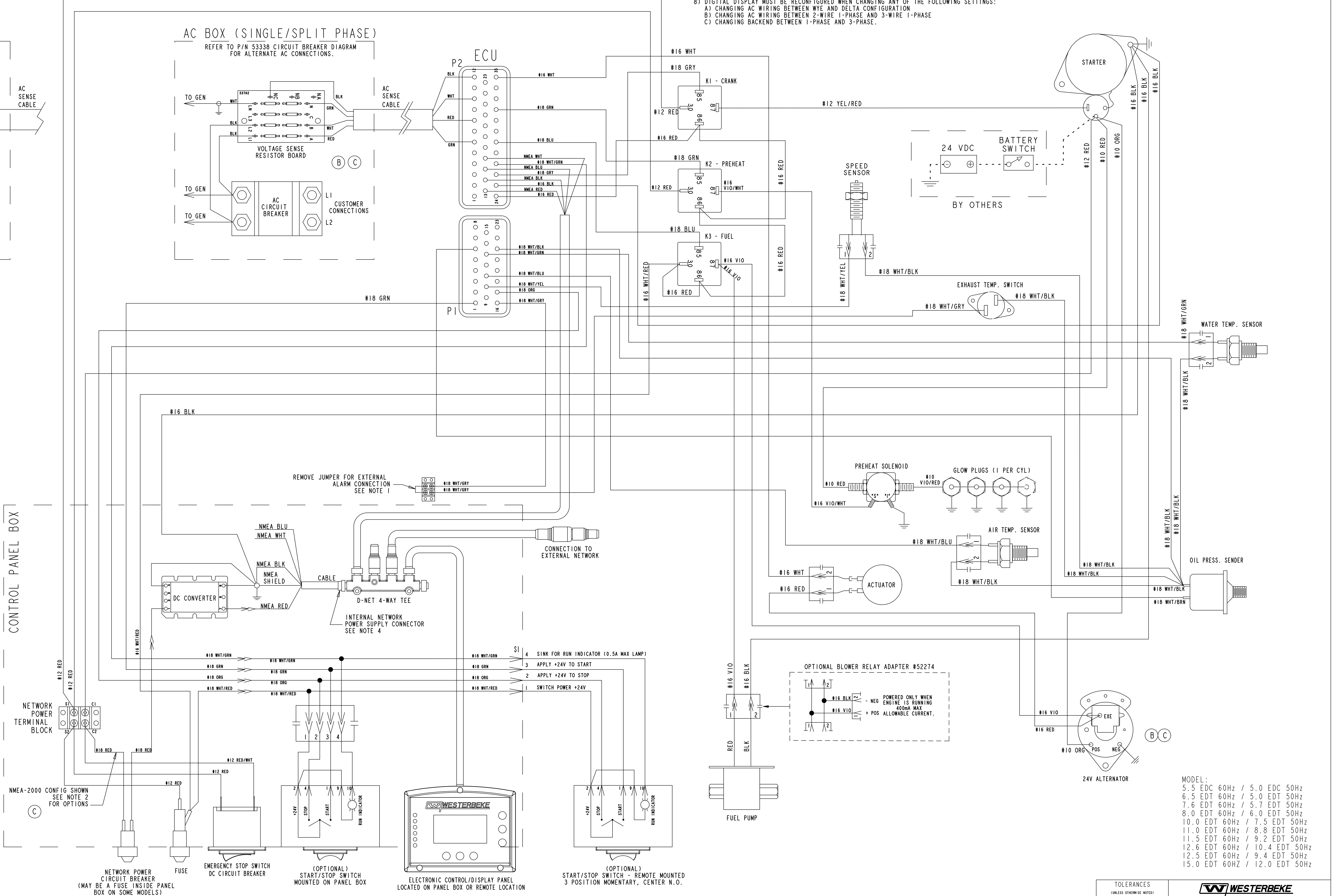
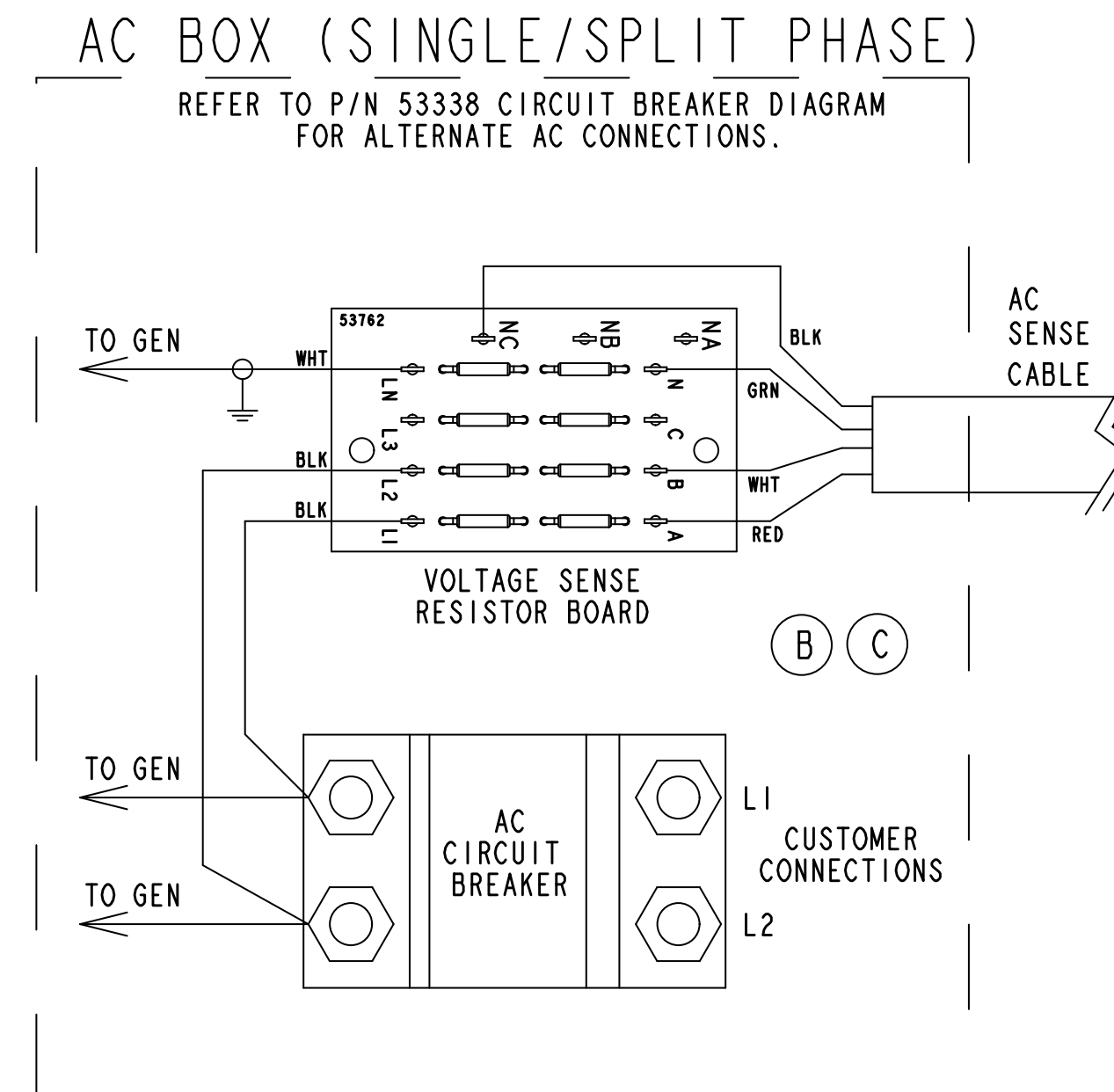
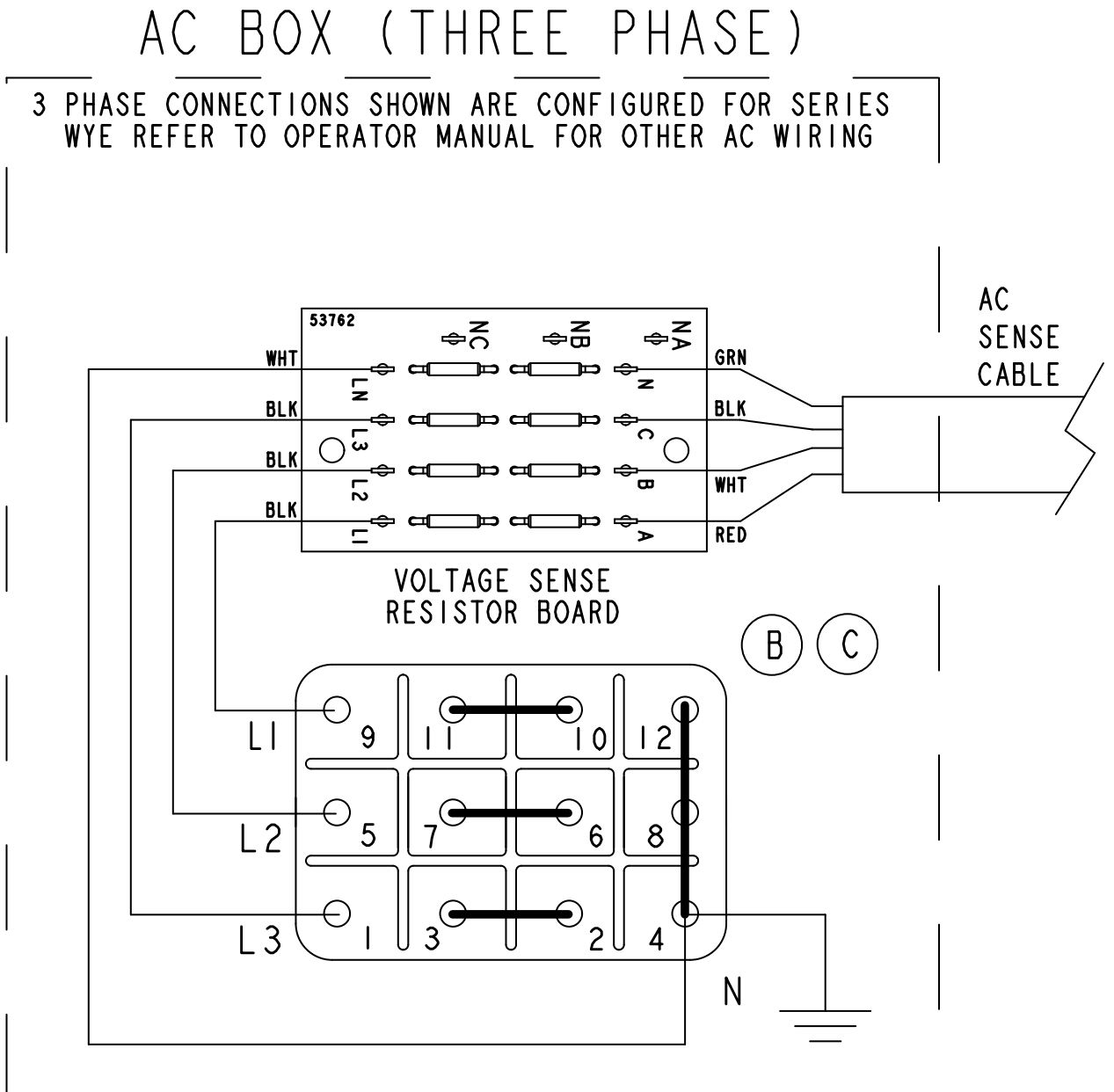


ECO NO.	DATE	REV.	REVISION RECORD	AUTH.	DR. BY
6443	1-17-2008	A	SHOW WESTERLINK TERMINAL BLOCK WIRING CONFIGURATION		GA
6629	8-25-2009	B	UPDATE VOLTAGE SENSE BOARD AND CLARIFY CIRCUIT BRK CONNECTION.		GA
6722	9-14-2010	C	UPDATED AND COMBINED 3P AND 1P. ADDED NETWORK NOTES AND WEG		GMA
7077	7-11-2014	D	ADD NEW MODELS		GA

- NOTES:
- EXTERNAL ALARM SYSTEM CONNECTION IS NOT A POWER SOURCE. CIRCUIT LOGIC IS CLOSED TO RUN / OPEN TO STOP GENSET.
 - FOR NMEA-2000: CONNECT IAMP FUSE/BREAKER WIRE TO C2 (AS SHOWN - DC BREAKER DOES NOT CONTROL NETWORK POWER) FOR WESTERLINK; CONNECT IAMP FUSE/BREAKER WIRE TO S27(DC BREAKER CONTROLS NETWORK POWER)
 - ECU WILL NOT POWER UP UNLESS NETWORK POWER IS PRESENT ON ECU P2-13. POWER IS SUPPLIED VIA THE NETWORK CABLE TO THE ECU. POWERING DOWN THE NMEA-2000 NETWORK WHILE THE GENSET IS RUNNING WILL SHUT DOWN THE GENSET.
 - IF THE NMEA-2000 NETWORK IS POWERED FROM A SOURCE EXTERNAL TO THE GENSET, THE INTERNAL NETWORK POWER SUPPLY CONNECTOR IN THE PANEL BOX MUST BE DISCONNECTED FROM THE 4-WAY TEE.
 - FOR MULTIPLE GENSETS CONNECTED TO THE SAME NMEA-2000 NETWORK, IF ONE GENSET IS SUPPLYING POWER TO THE NETWORK, THE OTHER GENSET MUST HAVE ITS INTERNAL NETWORK POWER SUPPLY DISCONNECTED FROM THE 4-WAY TEE.
 - WHENEVER NMEA-2000 NETWORK POWER IS CYCLED OFF AND BACK ON, THE GENSET MAY NEED TO BE STOPPED AND THE DC CIRCUIT BREAKER CYCLED TO RESTORE PROPER NETWORK COMMUNICATIONS.
 - SEE NETWORK HARDWARE INSTALLATION GUIDE 53076 FOR MORE INFORMATION ABOUT NETWORKING.
 - DIGITAL DISPLAY MUST BE RECONFIGURED WHEN CHANGING ANY OF THE FOLLOWING SETTINGS:
 - CHANGING AC WIRING BETWEEN WYE AND DELTA CONFIGURATION
 - CHANGING AC WIRING BETWEEN 2-WIRE 1-PHASE AND 3-WIRE 1-PHASE
 - CHANGING BACKEND BETWEEN 1-PHASE AND 3-PHASE.



MODEL:

5.5 EDC	60Hz / 5.0 EDC	50Hz
6.5 EDT	60Hz / 5.0 EDT	50Hz
7.6 EDT	60Hz / 5.7 EDT	50Hz
8.0 EDT	60Hz / 6.0 EDT	50Hz
10.0 EDT	60Hz / 7.5 EDT	50Hz
11.0 EDT	60Hz / 8.8 EDT	50Hz
11.5 EDT	60Hz / 9.2 EDT	50Hz
12.6 EDT	60Hz / 10.4 EDT	50Hz
12.5 EDT	60Hz / 9.4 EDT	50Hz
15.0 EDT	60Hz / 12.0 EDT	50Hz

TOLERANCES (UNLESS OTHERWISE NOTED)		WESTERBEKE	
INCHES	MILLIMETERS	TITLE	
.XX	±.00	DGGENSET WIRE 5.5 EDC, 6.5-15.0 EDT	
.XX	±.005	24V D-NET (WESTERLINK & NMEA-2000)	
CAST	±.03	DRAWN BY	DATE
FINISH	±.02	APPROVED BY	DATE
		SCALE NONE	SIZE
			DRAWING NUMBER
			REV.
		SHT. 1 OF 1	E 53477